

Carter® Ground Fueling
Underwing Refueling Nozzle

Model 64250



EATON

Powering Business Worldwide

Design Concepts

Eaton's Carter brand offers several standard underwing nozzles. Until recently, the latest technology has been Model 64200 pressure fueling nozzle. Now a nozzle derived from Model 64200 has been introduced, primarily for those airports that have extremely heavy duty requirements. Model 64250 nozzle, in addition to being designed for heavy duty use, has several new features outlined below.

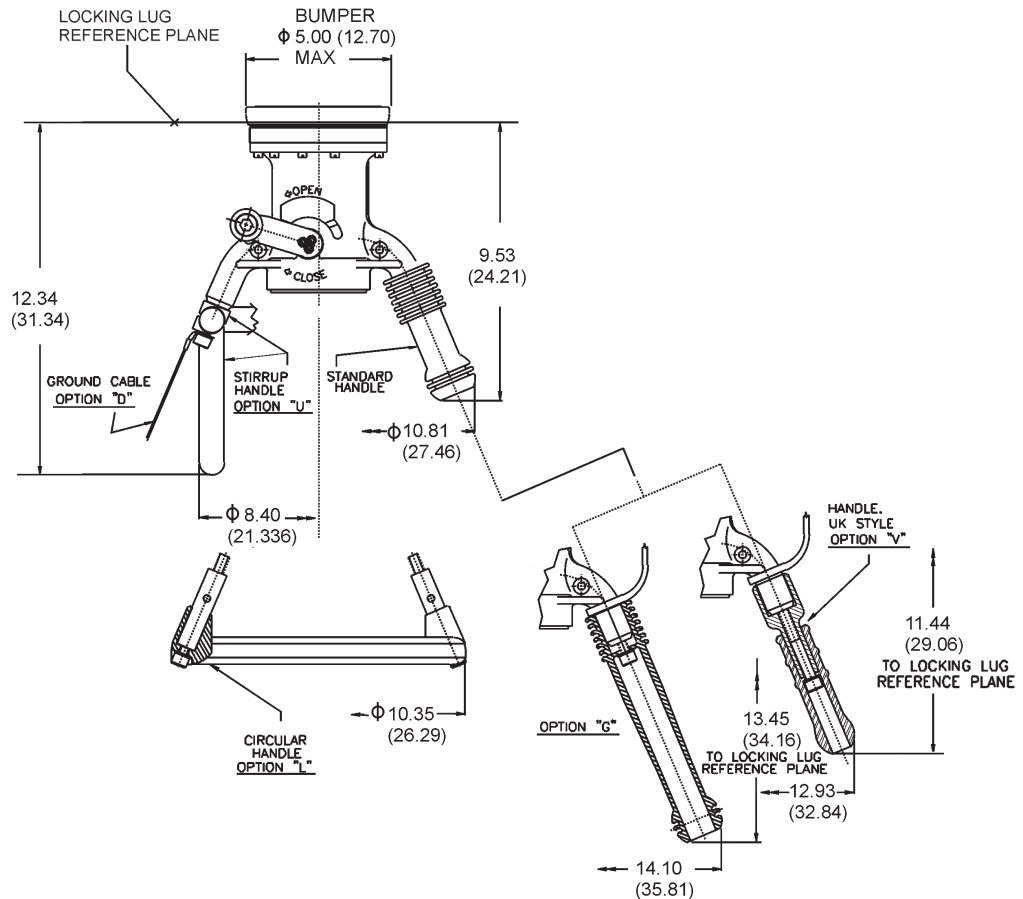
Features

- Easier swivelling under all conditions. Swivel independent of quick disconnect.
- Connects to 3-lug international standard aircraft adapter
- Designed in accordance with new SAE design specification for commercial nozzles AS5877
- Self-adjusting pressure loaded nose seal. Leak free under extreme side loads, worn adapters and extreme temperatures.
- Uses same accessories as previous 64200 and 64348 models. All accessories now have stainless steel wear ring in swivel ball joint.
- Lead-in ramps (interface with aircraft adapter lugs) of stainless steel for longer life
- Positive mechanical interlock — nozzle can not be opened until connected to aircraft; can not be removed from aircraft in open position
- Interlock mechanism internal to nozzle body
- No collar or other moving parts on exterior of nozzle with the exception of the operating lever

- Two threaded ports in nozzle body for simultaneous vacuum breaker and product sampling fitting installation are standard
- Lightweight and most rugged of any Carter brand nozzle
- Modular construction with use of bolt flanges minimized
- 2, 2-½ & 3 inch NPT & BSPP and 3 inch JIS threaded quick disconnect (QD) inlets available
- Optional 40, 60 & 100-mesh screens retained with snap rings for ease of removal
- Operating lever replaceable from exterior of nozzle and is made of less expensive, more ductile material. Also backed up with boss on nozzle body to prevent bending.
- 35 psi (2.413 bar), 45 psi (3.103 bar) & 55 psi (3.792 bar) hose end control valves (HECV) available
- Dry break or ball valve for easy strainer inspection available
- Low pressure drop
- Optional bonding cable and vacuum breaker
- Redundant safety lock on the QD
- Replaceable knob on operating handle eliminates razor sharp wear patterns prevalent on competitor's nozzles
- Options include a "U" bracket for nozzle stowage and one piece stirrup handle with stowage capability. No need to use an aircraft adapter as a stowage device.

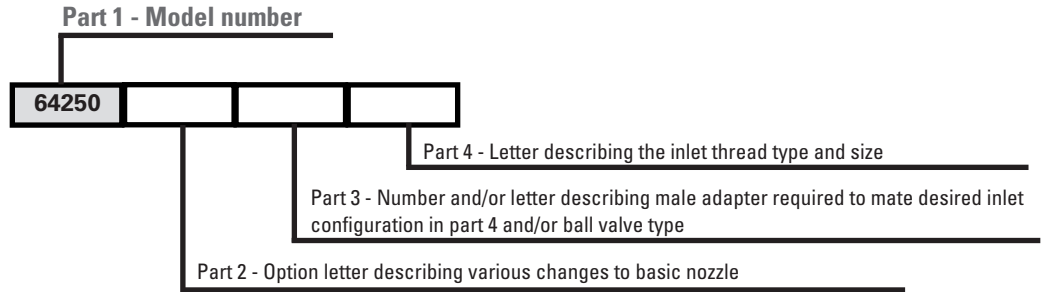
Envelope Dimensions

Dimensions shown in inches (millimeters)



Ordering Data

The part number for a complete nozzle consists of four parts as illustrated (right).



Part 2

The following options may be added to part two of the part number to obtain the desired unit configuration.

Option	Description	Option	Description
*A	Adds 40-mesh screen	K	Replaces standard operating handle with longer one
*B	Adds 60-mesh screen	L	Replaces standard carrying handles with circular handle
C	Adds 100-mesh screen	P	Adds pressure gauge with protective bracket
D	Adds bonding cable	Q	Adds Gammon sampling quick disconnect
E	Adds vacuum breaker	R	Adds nozzle stowage bracket
**F3	Adds 35 psi (2.413 bar) HECV	S	Adds 45° nozzle stowage bracket
**F4	Adds 45 psi (3.103 bar) HECV	T	Adds adapter to mate Whittaker accessories
**F5	Adds 55 psi (3.792 bar) HECV	U	Replaces standard handle with stirrup handles
G	Replaces standard handles with long handles (47233-2)	V	Replaces standard carrying handles with UK RAF style handles
H	Adds drag ring to nozzle with any option F in conjunction with option T or options 2 or 6 from part 3 (220870)	W	Adds military style bonding cable
J	Inlet adapter to mate 60427 style outlet	Y	Adds swivel elbow

* Options A, B & C only available when a male half from part 3 is specified

** To obtain a nozzle with a dual HECV setup specify two options in series, F5F4 results in 55 psi (3.792 bar) and 45 psi (3.103 bar) units with the former assembled nearest the nozzle inlet. If two HECV's are desired specify the highest pressure setting first.

Part 3

The configuration of the inlet is defined by adding the appropriate number(s) and/or letter(s) from the table below as part 3 in conjunction with the appropriate option letter from part 4.

Option	Description	Option	Description
*1	Indicates nozzle with flanged inlet HECV	R	Adds defuel key to remove strainer cap to ball valve
*2	Indicates nozzle with swivel inlet HECV	4	Adds male adapter half (44701 w/o HECV, 44185 with flanged inlet HECV, 44697 with swivel inlet HECV) to mate basic nozzle and thumb latch QD
3	Adds ball valve (64015). Options D, E, J & R (below) may be added to complete the ball valve specification	6	Adds male adapter half to mate std QD
D	Adds glass inspection port to ball valve	7	Adds male adapter half (44697 w/o HECV, 44185 with flanged inlet HECV) to mate dry break QD
E	Adds drag ring to ball valve	9	Adds male adapter half (43046 with flanged inlet HECV, 44362 otherwise) to mate 60427 style QD
J	Adds spanner wrench to ball valve		

* If option 1 or 2 is used with no additional options from part 3, then the shortest configuration nozzle will be provided

Part 4

The following options may be added to obtain a female half, QD or dry break, or to complete the specification of the ball valve outlet. The nozzle may terminate in an adapter half only. In this case leave part 4 blank.

Option	Description	Option	Description
H	Inlet thread — 2-½ inch NPT	N	Inlet thread — 2 inch BSPP
K	Inlet thread — 2-½ inch BSPP	P	Inlet thread — 2 inch NPT
L	Inlet thread — 3 inch NPT	Z	Inlet thread — 3 inch JIS (used only with options 6 & 9)
*M	Inlet thread — 3 inch BSPP		

* Three-inch BSPP inlet threads not available with option 3 ball valves

Examples:

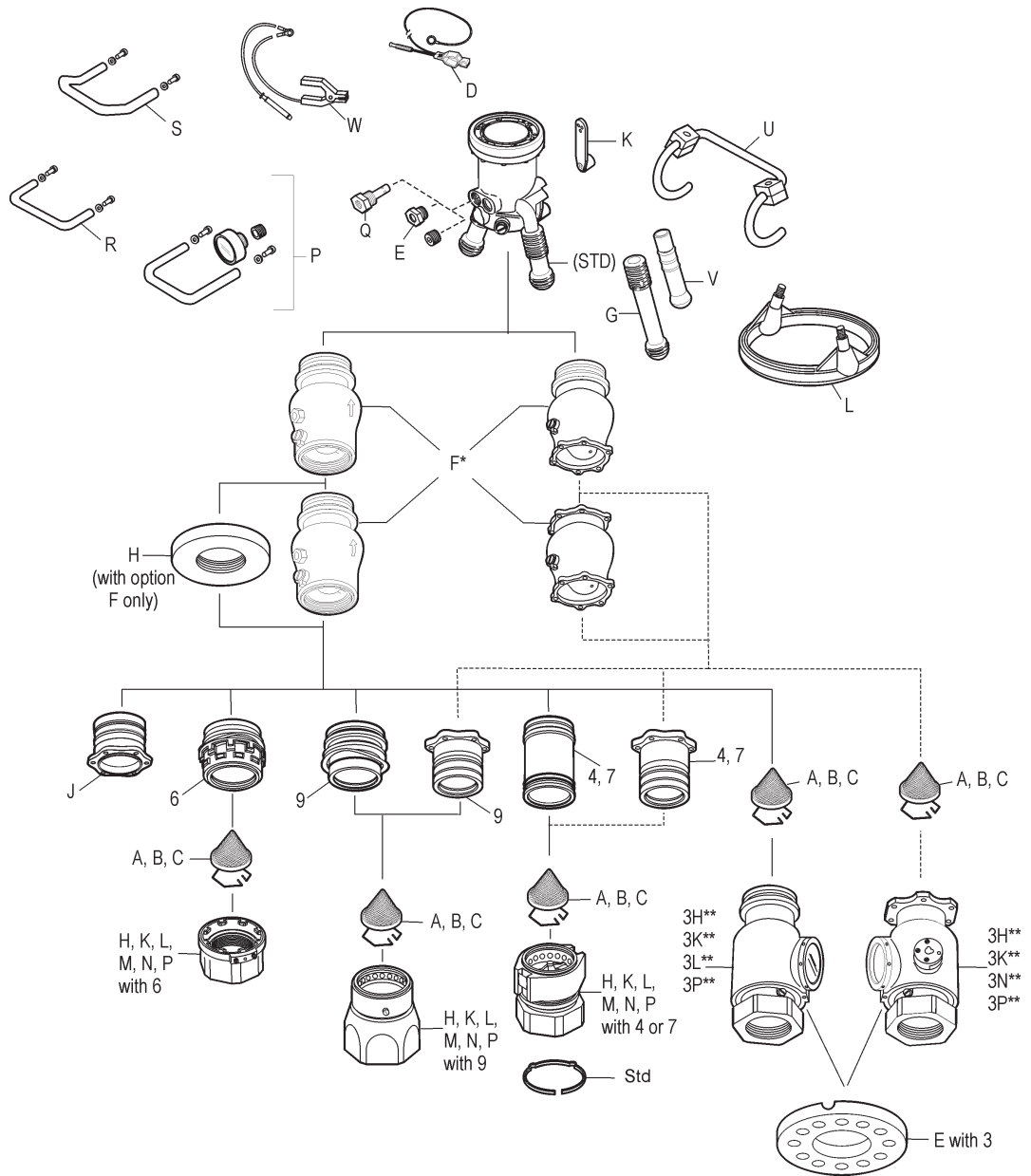
64250CD6H Nozzle with 100-mesh screen, bonding cable and standard QD with 2-½ inch NPT inlet thread

64250BF41 Nozzle with 60-mesh screen, 45 psi (3.103 bar) HECV with inlet flange to mate 60427 type accessories. Note that no inlet QD or other configuration is specified in this case.

64250F517P Nozzle with 55 psi (3.792 bar) HECV with flanged adapter half and 61154 dry break QD with 2 inch NPT inlet. Note: swivel adapter half and 61154 dry break QD can be specified by using 64250F527P.

Illustrated Options

Note: The solid lines present one path of compatible options while the dotted lines connect an alternate path of compatible options. Refer to the tables under Ordering Data on page 3 for complete descriptions of the various options.



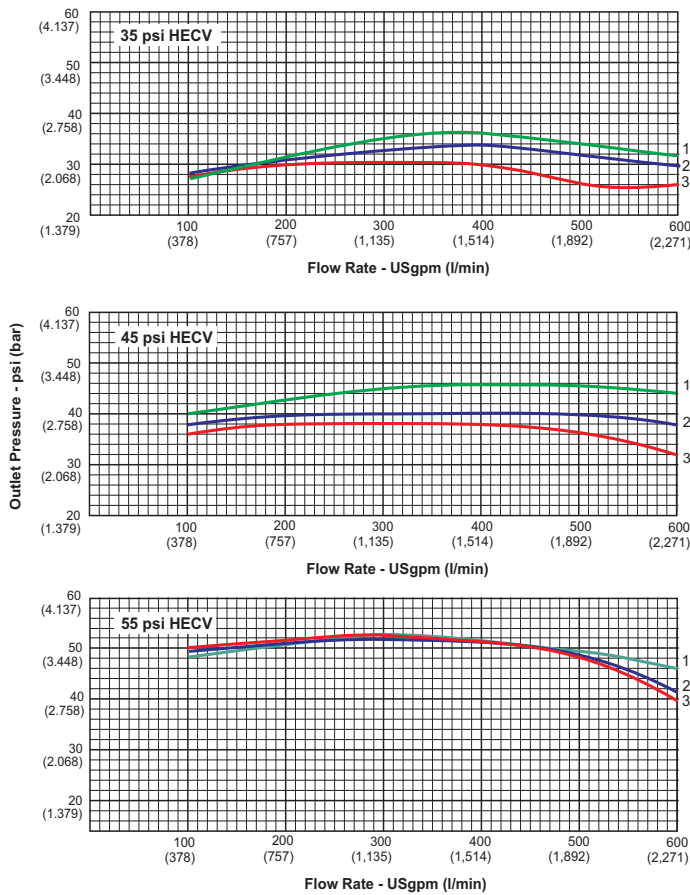
Hose End Control Valves

The hose end control valve (HECV) is designed to limit pressure at its outlet (at the pressure sensing port in the nozzle). The control pressure is a function of the main spring that loads the poppet. In addition to limiting pressure at the outlet, surge and lockup (no flow pressure) are also controlled. Refer to Model 60129-1 HECV brochure (TF100-76A) for more details on how this is accomplished. The following characteristics are typical:

- Normal spring setting (maximum pressure limits will be 5 psi (0.345 bar) greater than spring) — 35 psi (2.413 bar), 45 psi (3.103 bar) & 55 psi (3.792 bar) available
- Surge pressure control — 75 psi (5.171 bar) maximum with 0.5 second valve closure (minimum)
- Lockup pressure — 10 psi (0.689 bar) maximum over spring setting for 45 psi & 55 psi HECVs; 20 psi (1.379 bar) maximum over spring setting for 35 psi unit
- Pressure limitation — 5 psi (0.345 bar) over spring setting with inlet pressure up to 100 psi (6.895 bar)
- Hysteresis (difference in pressure limits between increasing and decreasing flow rates) — pressure limits for decreasing flow rates will normally be slightly greater than for increasing flow rates
- Defueling is possible through unit. However, a blockout device is required to maintain maximum flow — use Carter brand Model 61656 blockout device.

- Model 61656 blockout device recommended if system secondary control valve is to be checked

The curves presented below are typical for the inlet pressures and flow rates shown in a system with appropriate back pressure.



Curve 1	Control pressure with 100 psi (6.895 bar) inlet pressure
Curve 2	Control pressure with 90 psi (6.205 bar) inlet pressure
Curve 3	Control pressure with 75 psi (5.171 bar) inlet pressure

**Eaton
Aerospace Group
Conveyance Systems Division
9650 Jeronimo Road
Irvine, California 92618
Phone: (949) 452 9500
Fax: (949) 452 9992**

Eaton
Aerospace Group
Conveyance Systems Division
90 Clary Connector
Eastanollee, Georgia 30538
Phone: (706) 779 3351
Fax: (706) 779 2638

Eaton
Aerospace Group
Conveyance Systems Division
300 South East Avenue
Jackson, Michigan 49203-1972
Phone: (517) 787 8121
Fax: (517) 787 5758

Eaton
Aerospace Group
Conveyance Systems Division
11642 Old Baltimore Pike
Beltsville, Maryland 20705
Phone: (301) 937 4010
Fax: (301) 937 0134

Eaton
Aerospace Group
Conveyance Systems Division
15 Pioneer Ave.
Warwick, Rhode Island 02888
Phone: (401) 781 4700
Fax: (401) 785 4614

Eaton S. A.
Aerospace Group
Conveyance Systems Division
2 Rue Lavoisier BP 54 78310
Coignieres, France
Phone: (33) 130 69 30 00
Fax: (33) 130 69 30 56

Eaton Limited
Aerospace Group
Conveyance Systems Division
Broad Ground Road
Lakeside, Redditch
Worcestershire
B98 8YS
United Kingdom
Phone: (44) 1527 517555
Fax: (44) 1527 517556

Eaton S.A
Aerospace Group
Conveyance Systems Division
62 Chemin De Pau
64121 Serres-Castet
France
Phone: (33) 559 333 864
Fax: (33) 559 333 865

Eaton GmbH
Aerospace Group
Conveyance Systems Division
Rudolf-Diesel-Strasse 8
82205 Gilching
Germany
Phone: 49 (0) 8105 7530
Fax: 49 (0) 8105 7555

Vickers Systems Pte Ltd
Aerospace Group
Conveyance Systems Division
Lot 512, Jalan Delima,
Batamindo Industrial Park
Batam 294533, Indonesia
Phone: (62) 770 611823
Fax: (62) 770 611821

Eaton
Aerospace Group
9650 Jeronimo Road
Irvine, California 92618
Phone: (949) 452 9500
Fax: (949) 452 9555
www.eaton.com/aerospace

©2009 Eaton
All Rights Reserved
Printed In USA
Form No. TF100-105B
November 2009